



Park Lane Plaza, 2 Jamaica Street, Liverpool, Merseyside L1 0AF

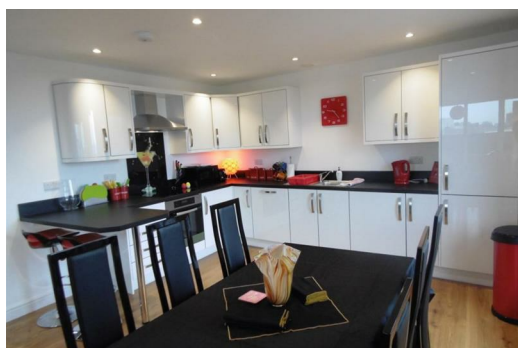
£1,400 PCM

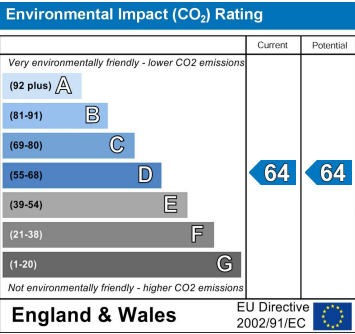
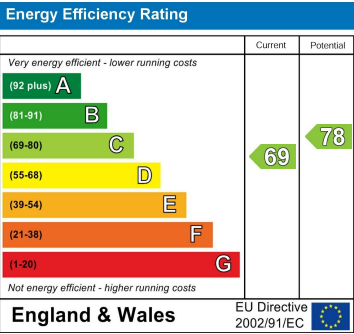
Welcome to this delightful two-bedroom apartment located in the vibrant Park Lane Plaza on Jamaica Street, Liverpool. This modern property offers a perfect blend of comfort and convenience, making it an ideal choice for both professionals and families alike.

Upon entering, you will find a spacious reception room alongside two well-appointed bedrooms, each designed to offer a peaceful retreat after a busy day in the city. With two bathrooms, including an en-suite, morning routines will be a breeze, ensuring privacy and ease for all residents.

One of the standout features of this property is the private patio, which offers a lovely outdoor space to enjoy fresh air and sunshine. Additionally, the apartment comes with parking. Situated in the heart of Liverpool, this apartment provides easy access to and from the City Centre.

Deposit: £1,400.00
Council Tax: Band C
Minimum Term: 12months





Berkeley Shaw Estate Agents Limited.
Company No. 0784754

Berkeley Shaw Real Estate Limited.
Company No. 05206927

